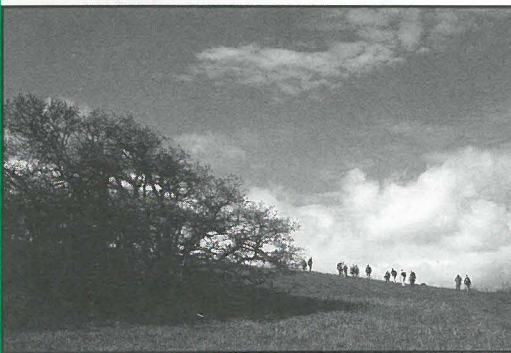
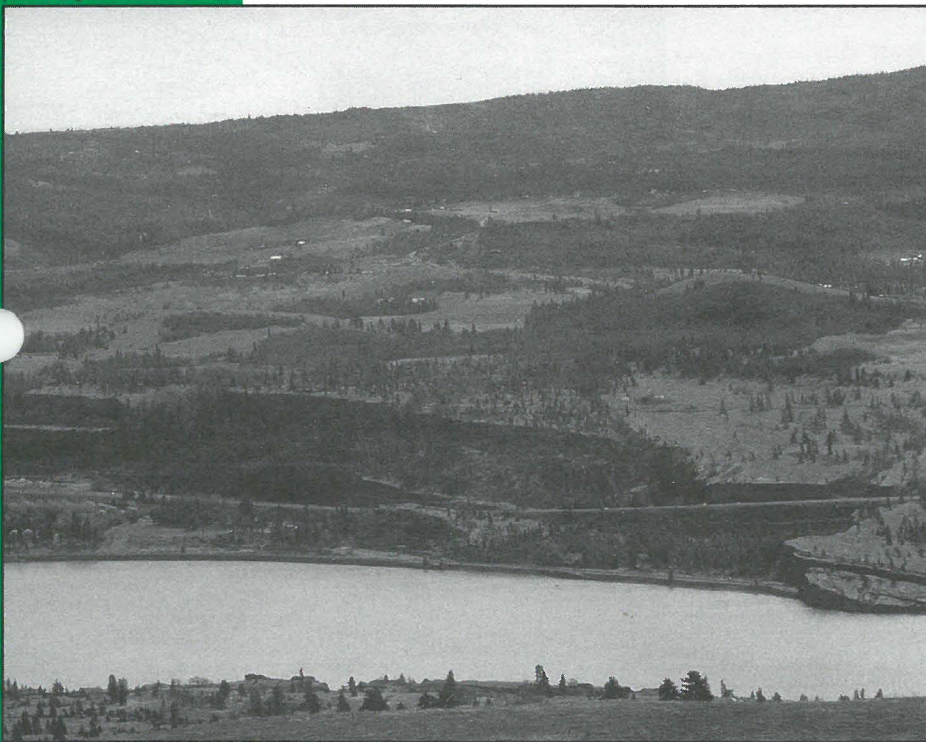


February 1998 Newsletter

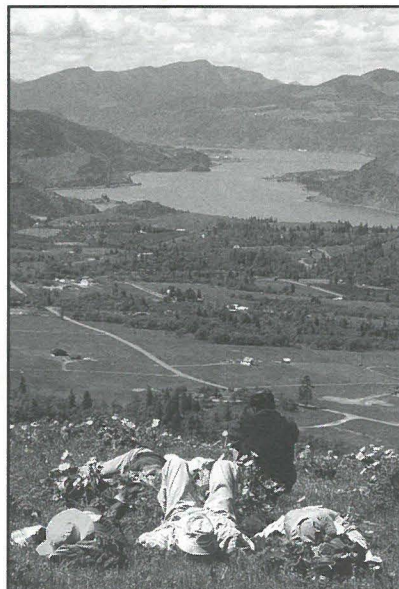
## Friends Builds Success and Increases Effectiveness in 1997

*Protection Gained for Key Scenic and Rural Lands*

photos by Ken Denis



Federal, state and local support for the Gorge Act and its programs are critical to ensure long-term protection of spectacular scenic vistas in the Columbia River Gorge National Scenic Area. These landscapes in the Rowena area are only partially protected today. Friends continues to work for full and permanent protection for special places in the Gorge.



With the support of our thousands of members in Washington state, Oregon and across the country, Friends' work in 1997 achieved significant accomplishments in protecting the Columbia River Gorge. Some highlights:

**1** Working in a partnership with Gorge landowners and the U.S. Forest Service, Friends gained Congressional support for Forest Service purchase of sensitive Gorge lands. \$8 million is available in 1998 to permanently protect thousands of acres of land at Cape Horn, the Catherine Creek and Major Creek watersheds and Mt. Pleasant.

**2** Friends convinced the Forest Service to purchase land offered for sale by willing sellers at Lower Cape Horn, Washington. Without Friends' support for public purchase of these lands, more than 100 acres would today be open to clearcutting and highly visible development. Instead, the Forest Service has purchased fee and easement interests to protect this landscape for future generations.

**3** Friends' legal program halted efforts to open the Gorge to suburban sprawl. Friends challenged the Skamania County Planning Department's approval of development on a 42-lot subdivision platted in 1912. At a hearing attended by Friends and more than a dozen local citizens opposed to urban-density development, the County Board of Adjustment reversed the

# Executive Director's Letter

**I'd** like to ask you to think about how the Northwest landscape has changed in the past 10 years — then think about the Gorge 10 years from now. In 10 years, will we still see stunning scenic vistas, farm lands, forest lands and open rural landscapes — or will the Gorge be cluttered with gated subdivisions, strip malls, fast food restaurants, billboards and trophy homes?

Decisions made by Congress, the Governors, state legislatures, Gorge Commission and Gorge counties in the next few years will answer this question.

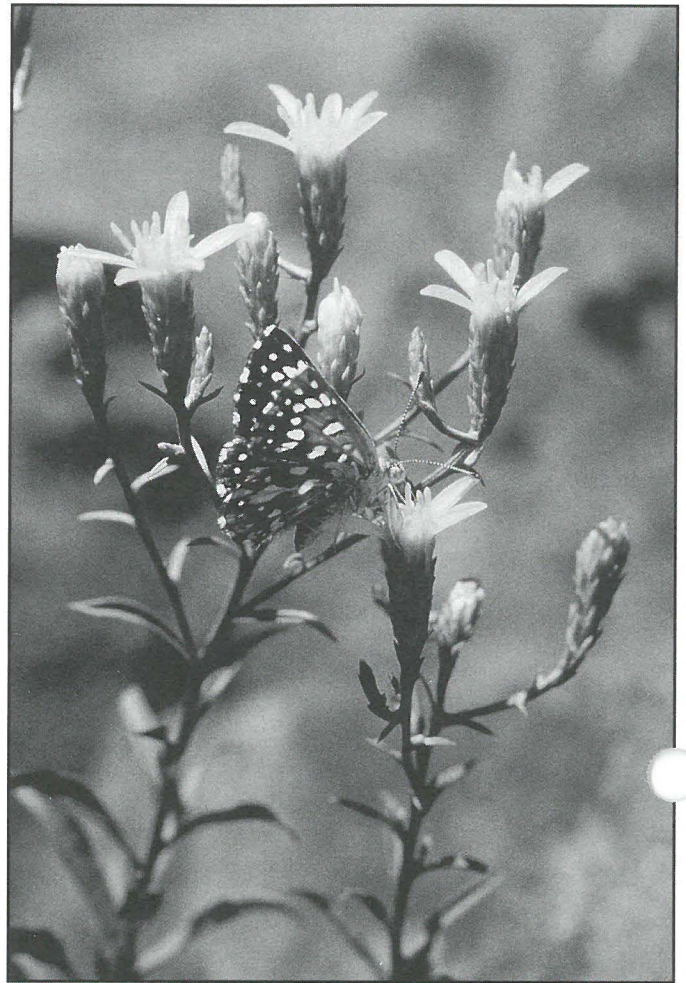
*People who care about the Gorge must be involved in the decisions that will shape its future.* During 1998, Friends will be working to:

- Increase public and political support for Columbia Gorge protection to ensure that Congress, the Governors, the Gorge Commission and Gorge counties make decisions that will conserve the rich scenic, natural, cultural and recreational heritage of the Columbia River Gorge for future generations.
- Build on our landmark *The State of the Gorge* report by developing a vision to carry Gorge protection into the next century, including policies to expand responsible recreation opportunities for people and protect Gorge farms, forests, open spaces, and wild lands.
- Ensure that Gorge protection is maintained and not rolled back in Congress.
- Continue public purchase of key Gorge lands, to provide permanent protection of scenic vistas and beautiful landscapes.
- Keep the Gorge off-limits to suburban sprawl and urban-density development of rural lands.
- Expand our educational outreach efforts to involve new partners in Gorge protection.

**With your support, Friends will be a clear, consistent voice for protecting the Columbia River Gorge — a resource that has no other voice at a time of the greatest development pressure in the history of the Northwest.**

*Lauri Aunan*

Lauri Aunan  
Executive Director



*The miracles of the Gorge include large magnificent landscapes and small, beautiful flowers, all needing long-term protection. The Hood River milk-vetch (*A. hoodianus*) is one of 15 wildflowers found only in the Columbia River Gorge.*

*Photo by Russ Jolley*

# Gorge Watch

## Citizen Involvement Update



### Congressman Blumenauer's Call to Action

More than 300 people attended Congressman Earl Blumenauer's December 1st Symposium on the Columbia River Gorge: A Call to Action. The event featured a spectacular slide presentation and a panel discussion with public comment. Members of the panel were Gorge Commissioner Steve McCarthy, Friends' Conservation Director Michael Lang, Wasco County Commissioner Scott McKay, and Barbara Bailey, former member of the Gorge Commission from The Dalles.

The future of protection of the Columbia River Gorge is in question following a serious attack on Gorge protection programs by the Oregon and Washington legislatures in 1997. Steve McCarthy was critical of the lack of leadership from the Gorge Commission as a whole. Michael Lang raised concerns about lack of enforcement and the threat of uncontrolled growth. Scott McKay discussed the need for more community involvement in decision-making. Barbara Bailey was concerned about attacks against the Gorge Commission, the agency responsible for charting future protection for the Columbia Gorge.

Many members of the audience participated during the question and answer session. Congressman Blumenauer wrapped up the evening by urging people to contact the Governors and asking them to make Gorge protection a priority. ■

### New Gorge Commissioners Appointed

by Kristin Reese

In October, 1997, Klickitat County appointed Goldendale business-

man Kenn Adcock to the Gorge Commission. Mr. Adcock, who owns a winery in Goldendale, Washington, has been an outspoken critic of the Gorge Commission and the Columbia River Gorge National Scenic Area.

Skamania County resident Katharine Akers Sheehan is the newest member of the Gorge Commission, appointed by Governor Gary Locke in late December. Ms. Sheehan has a Ph.D. in forest entomology and is employed part time by the US Forest Service. Sheehan replaces Sally Newell as the Governor's National Scenic Area appointee, one of three commissioners to represent the state for a four-year term. ■

### Adopt-a-Highway Crew Springs into Action

Friends of the Columbia Gorge Adopt-a-highway litter pick-up is scheduled for Saturday, March 28. Volunteers can meet at 8:00 a.m. at the ODOT parking lot, at NE 60th & Glisan or at 8:30 a.m. at the parking lot east of Multnomah Creek, Old Scenic Highway. Dress for the weather — work boots, work gloves. Call Ken Denis at 287-2761 or Friends' office at 241-3762 for more information. ■

### Many thanks to Volunteers

Friends would like to thank Susan Wright for her ongoing administrative support. Susan left in Decem-

ber to go back to school. Best of luck to you, Susan and many thanks!

We would also like to thank Judy Price for administrative support. Also, thanks to Carmen Johnson, John Willey and Loretta Johnston for database support. Your help really makes a difference! ■

### Celebrate Earth Day with OLCV

Please join the Oregon League of Conservation Voters in celebrating Earth Day by honoring 100% pro-environment voters



Friends' volunteers help keep the Historic Highway clean and beautiful. photo by Ken Denis

from the Legislature at the First Annual Dinner for the Environment at the Portland Hilton on Friday, April 17. Governor Kitzhaber has been invited to speak. Denis Hayes, president of The Bullitt Foundation and the organizer of the original Earth Day in 1970 will preside over the evening.

Help sponsor a Friends' table! Call Lauri at 503-241-3762. ■

# Friends Continues to Halt Subdivisions in the Gorge

by Michael Lang

The Columbia River Gorge National Scenic Area Act (Gorge Act) was passed, in part, to protect rural landscapes in the Gorge from urban sprawl. Eleven years after the creation of the National Scenic Area, developers continue efforts to build on turn-of-the-century subdivision plats in violation of Washington state law, the Gorge Act and the sentiments of rural residents in the Gorge.

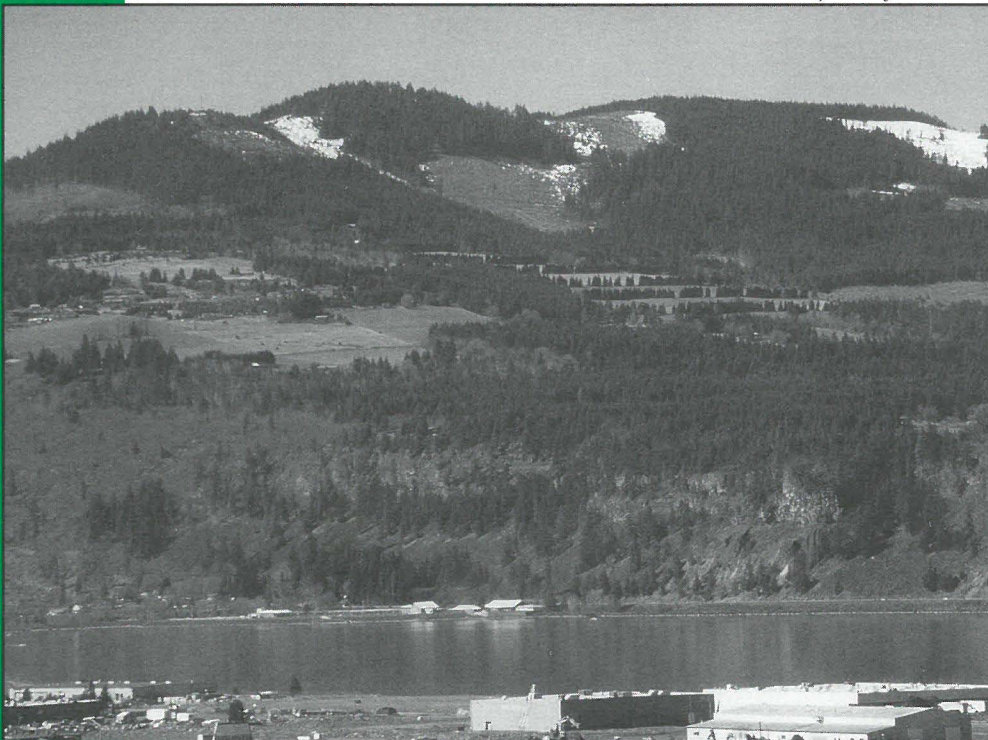
Last April, Friends successfully appealed a Skamania County decision granting development on a 42-lot subdivision, platted in 1912, in rural Skamania County. Since then, the county has turned away three applications for development in subdivisions.

Unfortunately, some developers continue to push for

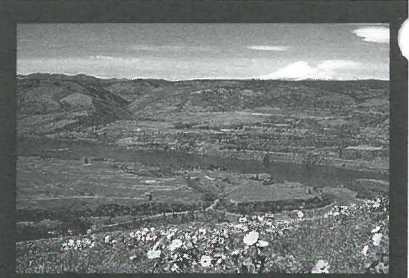
approval to build urban-density subdivisions on Gorge rural lands. An Underwood-area developer has appealed Skamania County's denial of his application to build on urban-scale lots. Friends is defending Skamania County's decision and will support the county when the case is heard before the Gorge Commission later this year. If the developer's appeal is successful, hundreds of acres of rural Gorge lands will be opened to uncontrolled urban development.

Friends was represented by Gary Kahn of Reeves, Kahn and Eder and assisted by Ivan Lieben, staff legal assistant, and Jack McDonald, volunteer legal researcher. Both Ivan and Jack are law students at the Northwestern School of Law, Lewis and Clark College. ■

photo by Ken Denis



Developers continue to push for urban subdivisions in Underwood, Washington, threatening to open the Gorge to uncontrolled growth and loss of orchards and vineyards in the area.



## Membership Form

### Join Friends of the Columbia Gorge

- \$35 Family
- \$25 Individual
- \$15 Student/Senior
- Other: \$ \_\_\_\_\_

Name: \_\_\_\_\_

Phone: \_\_\_\_\_

E-Mail: \_\_\_\_\_

Address: \_\_\_\_\_

City: \_\_\_\_\_

State: \_\_\_\_\_ Zip: \_\_\_\_\_

**YES, I want to volunteer for the Gorge**

- Adopt-A-Highway Litter Pickups
- Habitat and Botanical Restoration
- Community Education
- Hiking Activities
- Attending Hearings
- Technical Support
- Other: \_\_\_\_\_

Mail your membership coupon and contribution to:  
Friends of the Columbia Gorge  
P.O. Box 40820  
Portland, Oregon 97204  
(503) 241-3762

## Friends Wish List

Your donation of any of this office equipment will help our Gorge protection work!

- **Computer and monitor** 486 or preferably Pentium-133, 32 MB RAM, 1.2 GB HD

With increased staff and workload, another computer is greatly needed.

- **Laser Printer** or bubble-jet that can handle constant use

- **Programmable Plain-Paper Fax Machine.** ■

# FRIENDS OF THE COLUMBIA GORGE

## 1998 Spring Wildflower Hikes

**F**riends of the Columbia Gorge presents the 1998 Spring Wildflower hiking series. These hikes are to promote awareness and appreciation of the beautiful Columbia River Gorge. Follow the wildflower bloom as the season unfolds in the Columbia River Gorge.

Carpools depart at 8:00 am from Gateway/ NE 99th Ave. Park & Ride (S.E. corner), from I-84 East, Exit 7, immediate right onto NE 99th Avenue, Portland. Second meeting places are listed below. Donation to drivers of 5 cents per mile. Bridge tolls (75 cents each way) and trailhead parking fees (\*fees - \$3 per car) are shared.

Prior sign-up is not necessary. Participants should be in good condition and be prepared for the weather.

Hikes will not be canceled because of rain — weather tends to be drier east of Hood River. Participants accept responsibility for their own safety. For additional information, contact Friends of the Columbia Gorge (503) 241-3762.

**What to bring:** Daypack containing lunch, water, rain gear, extra clothing (coat, cap and gloves), insect repellent, first aid kit, camera, binoculars, and other personal items. No alcohol, drugs, fire arms or pets. *Wildflowers of the Columbia Gorge* by Russ Jolley is a field guide many participants carry on these hikes.

**What to Wear:** Long sleeves, long pants, lug-soled-waterproof hiking boots are recommended.

### **APRIL 4 - CATHERINE CREEK-WEST**

Wildflower expert Barbara Robinson will lead us from Rowland Lake on a stunning loop hike that incorporates historic wagon roads, great views, and miles of flowers. Hike 7 miles with 1,300 feet elevation gain. 2nd meeting place: 9:30 am Rowland Lake Fishing Access. From north end of Hood River Bridge drive east on Hwy. 14 5.8 miles. Turn left on County Rd. 1230, before Milepost 71, travel .5 mile to fishing access.

### **APRIL 11 - LYLE CHERRY ORCHARD**

Friends' Chair Emeritus Nancy Russell will lead us up a series of benches, gaining 1,000 feet in the first mile, to the wind-swept, flower-studded plateau and to a deserted cherry orchard. Hike 4 miles with 1,400 feet elevation gain. 2nd meeting place: 9:30 am - Bridge Mart, just east of the Washington end of Hood River Bridge.

### **APRIL 18 - DALLES MOUNTAIN STATE PARK**

Hiking enthusiast Bill Daniels and former Dalles Mountain Ranch owner Pat Bleakney will show us gorgeous views of wildflower meadows. Hike 7 miles with minimal elevation gain (1,000 feet elevation loss). 2nd meeting place: 9:45 am at Horsethief Lake State Park day-use area. I-84 exit 87, north on Hwy. 197 for 3 miles, east on Hwy. 14 for 1.5 miles.

### **APRIL 25 - MEMALOOSE HILLS**

Wildflower experts Nancy Russell and Russ Jolley will lead us to spectacular wildflower meadows in the Memaloose Hills in the Rowena area. Hike 5-6 miles with 800 feet elevation gain. 2nd meeting place: 9:30 am at Memaloose Rest Area, south side of I-84 eastbound, exit 72.

### **MAY 2 - DESCHUTES RIVER TRAILS**

Desert Trail Association's Ross and Jenna Edginton will lead us up to Ferry Springs for terrific views in a high desert setting and back along the riverside trail past historic sites. Hike 8 miles with 750 ft. elevation gain. 2nd meeting place: 9:45 am at Deschutes River State Park off I-84 exit 97 (Celilo), then 4 miles east.

### **MAY 9 - WELDON WAGON TRAIL**

Gorge enthusiast Julia Ferreira will lead us along a pioneer route through open wildflower slopes with views of the idyllic White Salmon River valley. Hike 7.5 miles with 1,500 ft. elevation gain. 2nd meeting place: 9:15 am at White Water Market on east side of Hwy. 141 in Husum, Washington.

### **MAY 16 - GRASSY PASS (\*fee)**

Mazama's Richard Getgen will lead us along the Cascade Crest Trail past a former lookout site on Grassy Knoll to an alpine setting with sweeping views of Mt. Adams and Mt. Hood. Hike 7 miles with 1,500 feet elevation gain. 2nd meeting place: 9:15 am at Dog Mtn. parking lot on Hwy. 14 about 12.5 miles east of Bridge of the Gods.

### **MAY 23 - DOG MOUNTAIN LOOP (\*fee)**

Mazama's Carolyn Jenkins will take us at an easy pace to the balsamroot-filled slopes of this Gorge classic to enjoy the expansive views. Hike 7 miles with 2,900 feet elevation gain. 2nd meeting place: 9:15 am at trailhead parking lot on Hwy. 14, 12.5 miles east of Bridge of Gods.

### **MAY 30 - EAGLE CREEK(\*fee)**

Mazama's Billie Goodwin will lead us along this popular canyon trail. Spectacular waterfalls including Punchbowl, Skoonichuck, Tunnel and Cross-Over await the group. The group will be split into units of 12 at the Mark O. Hatfield Wilderness boundary — destination will vary according to ability. Hike 7-12 miles with elevation gain of 800-1,200 feet. 2nd meeting place: 8:45 am at Eagle Creek Trailhead, I-84 eastbound, exit 41.

### **JUNE 6 - TRIPLE FALLS**

Photographer and Gorge enthusiast Ken Denis leads us past Horsetail, Ponytail and Oneonta Falls to this unique triplet on Oneonta Creek. Hike 4.5 miles with 950 feet elevation gain. 2nd meeting place: 8:40 am at Horsetail Falls parking lot on Scenic Hwy.

### **JUNE 13 - HAMILTON MOUNTAIN LOOP**

Gorge enthusiast Ray Hayden will lead this hike during its prime wildflower-blooming period past waterfalls, rock outcroppings, and far-ranging views. Hike 9 miles with 2,200 feet elevation gain. 2nd meeting place: 9:30 am at trailhead parking area in Beacon Rock State Park 1/2 mile north of Hwy. 14.

### **JUNE 20-21 - ANNUAL GORGE WEEKEND**

Brochure will be available from the Friends by May 15th. ■



photo by Hannah Davidson

## Friends Builds Success ...

*continued from front cover*  
approval. The Planning Department later denied an application to begin development of a 60-lot, 1908 subdivision across the river from Multnomah Falls.

**4** Together with Washington citizens and conservation groups, Friends worked to ensure a strong appointment by Governor Locke to the Columbia River Gorge Commission. "Members of the Gorge Commission need to support the Gorge Act and provide strong leadership in the face of tremendous challenges for Gorge resources and Gorge communities," said Friends' Executive Director Lauri Aunan. "We are pleased that Governor Locke appointed Katharine Sheehan, a resident of Prindle, to represent the state of Washington on the Commission."

**5** Friends continued to increase its membership and support base.

Since 1996, Friends' membership has tripled to nearly 3,000 (see story below).

**6** Friends worked with a diverse partnership including the Columbia Gorge Windsurfing Association, Hood River Valley Residents Committee, Columbia River United, Central Cascades Alliance, The Native Plant Society of Oregon, The Nature Conservancy and Trust for Public Land, to create a vision and a plan for responsible public recreation and resource protection in the Rowena area, an important part of the Gorge in eastern Oregon.

These and many other victories, large and small, are important to ensure that the heritage of the Columbia River Gorge is protected for future generations. In 1998, Friends looks forward to working closely with all people who care about the future of the Columbia River Gorge and its communities. ■

## Friends' Membership on the Rise

**C**olumbia River Gorge protection has faced severe challenges over the last two years. Thanks to the continuing support of members and an increased awareness of the threats to the unique beauty of the Gorge, membership with Friends of the Columbia Gorge has tripled over the past 18 months. Friends is now one of the largest conservation organizations in the region with nearly 3,000 members.

Oregon members number just under 2,200. A marked increase in Washington support, now more than 800 members, indicates growing concern over threats to the region. More than 100 members live outside the region, representing 27 states and 4 countries.

With increased pressures facing the Columbia River Gorge, Friends is committed to strengthening its membership. Your continued support will strengthen the voices for permanent protection of the spectacular landscapes and resources that the Columbia River Gorge offers. Thank you very much, members of Friends of the Columbia Gorge. ■

## Foundations Help the Friends' Work

**F**riends wishes to thank the following organizations and foundations for their very generous support in 1997

- Adams Foundation
- The Bullitt Foundation
- The Burning Foundation
- Clark Foundation
- Collins Foundation
- Ralph and Adolph Jacobs Foundation
- Jackson Foundation
- W. Alton Jones Foundation
- Kohnstamm Family Foundation
- Kongsgaard-Goldman Foundation
- Lazar Foundation
- Mazamas
- McGraw Family Foundation
- Merrill Lynch & Co. Foundation
- The Mitzvah Foundation
- Morley Brothers Foundation
- Network General Advised Fund
- Brian G. and Gwyneth Gamble Booth Fund of the Oregon Community Foundation
- Helen H. Van Buren Fund of the Oregon Community Foundation
- John and Martha Marks Fund of the Oregon Community Foundation
- L.L. Stewart Fund of the Oregon Community Foundation
- William Wessinger Fund of the Oregon Community Foundation
- Oregon Roadside Council
- PGE Foundation
- Portland Garden Club
- Portland General Electric
- REI
- Rejuvenation Inc.
- Harold and Arlene Schnitzer Foundation
- True North Foundation
- Rose E. Tucker Charitable Trust
- Wanke Cascade
- Wessinger Foundation

# Friends News...

## Annual Meeting Features Wildflower Specialist

by Nancy Russell

Mark your calendar now for the Friends' Annual Meeting at 1:30 pm on Sunday, March 15, 1998 at Skamania Lodge. You will receive an invitation with all the details in the mail.

Following a brief business meeting, Barbara Robinson will show us her beautiful and informative slide program, "A Wildflower Walk up Tom McCall Point." McCall Point is a spectacular 1,772 foot promontory overlooking the Rowena Plateau. It features top-to-bottom views of Mt. Adams and Mt. Hood, panoramic river vistas and masses of spring wildflowers. Ms. Robinson's photography of flowers in this scenic setting is superb.

No one knows the Rowena Plateau and its unique flora better than Barbara Robinson.

In 1985 Ms. Robinson raised the money for Oregon State Parks to purchase the hilltop and arranged the management of the property by The Nature Conservancy (TNC) — a partnership of Oregon State Parks and TNC that exists to this day.

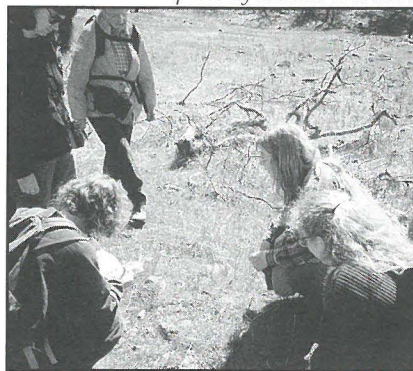
We look forward to sharing this excellent wildflower program with you. ■

## Friends Longtime Staff Helen Ehelebe Retires

In December, Friends board and staff gathered to thank Helen Ehelebe for her many years of work on Friends' staff and wish her well in her retirement. As Friends' office and financial manager for eight years, Helen was a mainstay of many of our most important activities, including membership communications and support, sound fiscal management, and keeping the office supplied, maintained and on track.

"Helen's terribly competent and dependable work over the past 8 years has made a huge contribution to the success of the Friends' Gorge pro-

photo by Hannah Davidson



Barbara Robinson shows the beauties of the Gorge to hikers.

gram," said Friends' founder and Chair Emeritus Nancy Russell. "We are going to miss her."

## Friends Welcomes New Fiscal Manager

Friends is pleased to introduce the newest member of our staff, Tom Del Savio, as our Fiscal Manager. Tom has an extensive background in community-based economic development projects in Appalachia and Oregon. He most recently served as Director of Finance and Development for Peninsula Children's Center in Portland, OR.

"We're excited that Tom has joined our team," said Friends' Executive Director Lauri Aunan. "Tom brings us good fiscal and nonprofit experience and will help us maintain and enhance our fiscal and program strength." ■

## Legal Assistants Staff Changes

Friends' Legal Assistant, Ivan Lieben, has moved on to focus on his studies at Northwestern School of Law. Ivan assisted with valuable research and improvements to our development review process.

Friends' new Legal Assistant Amie Wexler is a second year law student at Lewis and Clark College. She will review development proposals and conduct legal research for land use appeals. ■

## Friends of the Columbia Gorge

319 SW Washington St., #301  
Portland, Oregon 97204  
(503) 241-3762

E-mail: [focg@teleport.com](mailto:focg@teleport.com)  
<http://www.focg.com/columbiagorge.html>

## Mission Statement

*Friends of the Columbia Gorge shall vigorously protect the scenic, natural, and cultural and recreational resources within the Columbia River Gorge National Scenic Area.*

*We fulfill this mission by ensuring strict implementation of the National Scenic Area Act; promoting responsible stewardship of Gorge lands and waters; encouraging public ownership of sensitive areas; educating the public about the unique natural values of the Columbia River Gorge and the importance of preserving those values; and working with groups and individuals to accomplish mutual preservation goals.* —Adopted November 20, 1997

## Board of Directors

John Reynolds, *Chairman*  
Nancy N. Russell, *Chairman Emeritus*  
Rick Ray\*, *Vice Chairman*  
Michael P. Ryan, *Treasurer*  
Jeanne Norton, *Secretary*  
William Bell\*  
Broughton H. Bishop  
Bowen Blair, Jr.  
Ken Denis  
Spencer Dick  
Nick Dodge  
Elmer Lierman\*  
Kate McCarthy\*  
Len Swenson\*  
\* Gorge residents

## Staff

*Executive Director:* Lauri Aunan\*  
*Fiscal Manager:* Tom Del Savio  
*Land Use Counsel:* Gary K. Kahn  
*Conservation Director:* Michael Lang  
*Development Assistant:* Matthew Burke  
*Receptionist/Clerk:* Marna Moore  
*Outreach Director:* Kristin Reese  
*Development Assistant:* Matthew Burke  
*Administrative Assistant:* Kimberlee Snow  
\* Gorge resident

## Newsletter Contributors

*Contributors:* Lauri Aunan, Matt Burke, Hannah Davidson, Ken Denis, Michael Lang, Nancy Russell, Kristin Reese  
*Editor and Layout:* Kathleen Krushas

# Thank You

for your  
special contributions

*IN MEMORY OF NONIE MACKENZIE*

Grace Ester  
Bada Paddock

*IN MEMORY OF ELIZABETH MARTIN*

Jane & Wallace E. Banta  
The Kostiner Family  
Mary & Pete Mark

*IN MEMORY OF MICHAEL ZANDER*

Mr. & Mrs. Edmund Zander

*IN MEMORY OF TED FREEMAN*

Ellen Spear

*IN MEMORY OF BEVERLY EDWARDS*

Jean Meihoff

*IN MEMORY OF JOHN ELIOT ALLEN*

David Olson

*IN MEMORY OF HELEN JAMES*

Elizabeth Martin

*IN MEMORY OF ROBERT SORBER*

George & Irene Starr  
Alice & Dick Stoner  
Andrea Storm  
Carolyn Turner

Rev. Arthur & Mrs. Carol  
Wahlers

*IN MEMORY OF ED ROBERTSON*

Victor & Phyllis Clausen

## Friends of the Columbia Gorge

P.O. Box 40820

Portland, Oregon 97240-0820

*Address correction requested*

Non Profit  
U.S. Postage  
**PAID**  
Portland, OR  
Permit No. 2623

## Gorge Calendar

**March 17 Columbia Gorge Commission Meeting**  
9:00 am, Skamania Lodge, Stevenson, WA

**March 15 Friends' Annual Meeting: 1:30 pm**  
Skamania Lodge, Stevenson, WA

**March 28 Adopt-a-Highway Spring Clean-up**  
8:00 am, ODOT at NE 60th & Glisan or 8:30 am  
Multnomah Falls east lot on Scenic Hwy.

**April 4-  
June 13 Saturday Spring Wildflower Hikes**  
See page 5 for details

**April 14 Columbia Gorge Commission Meeting**  
9:00 am, Skamania Lodge, Stevenson, WA

**April 17 OLCV 1st Annual Dinner for the  
Environment**  
Portland Hilton 5:00 p.m. with Gov. John  
Kitzhaber (invited) and Denis Hayes

